

Best Practices

Using Reef Balls for Shellfish Restoration

- ABSTRACT
 - Need
 - Research since the 90's
 - Projects Using Reef Balls
 - Why the Reef Ball
 - Best Practices

An underwater photograph showing a series of Reef Balls, which are large, porous, spherical structures designed to look like natural coral. They are arranged in a line on the seabed, surrounded by green seagrass. The water is clear and blue, with sunlight filtering through from above. The text "Why with a REEF BALL™" is overlaid at the top.

Why with a REEF BALL™

Reef Balls were designed to look like it belongs in the ocean.

The Reef Ball

Complexity of a reef structure



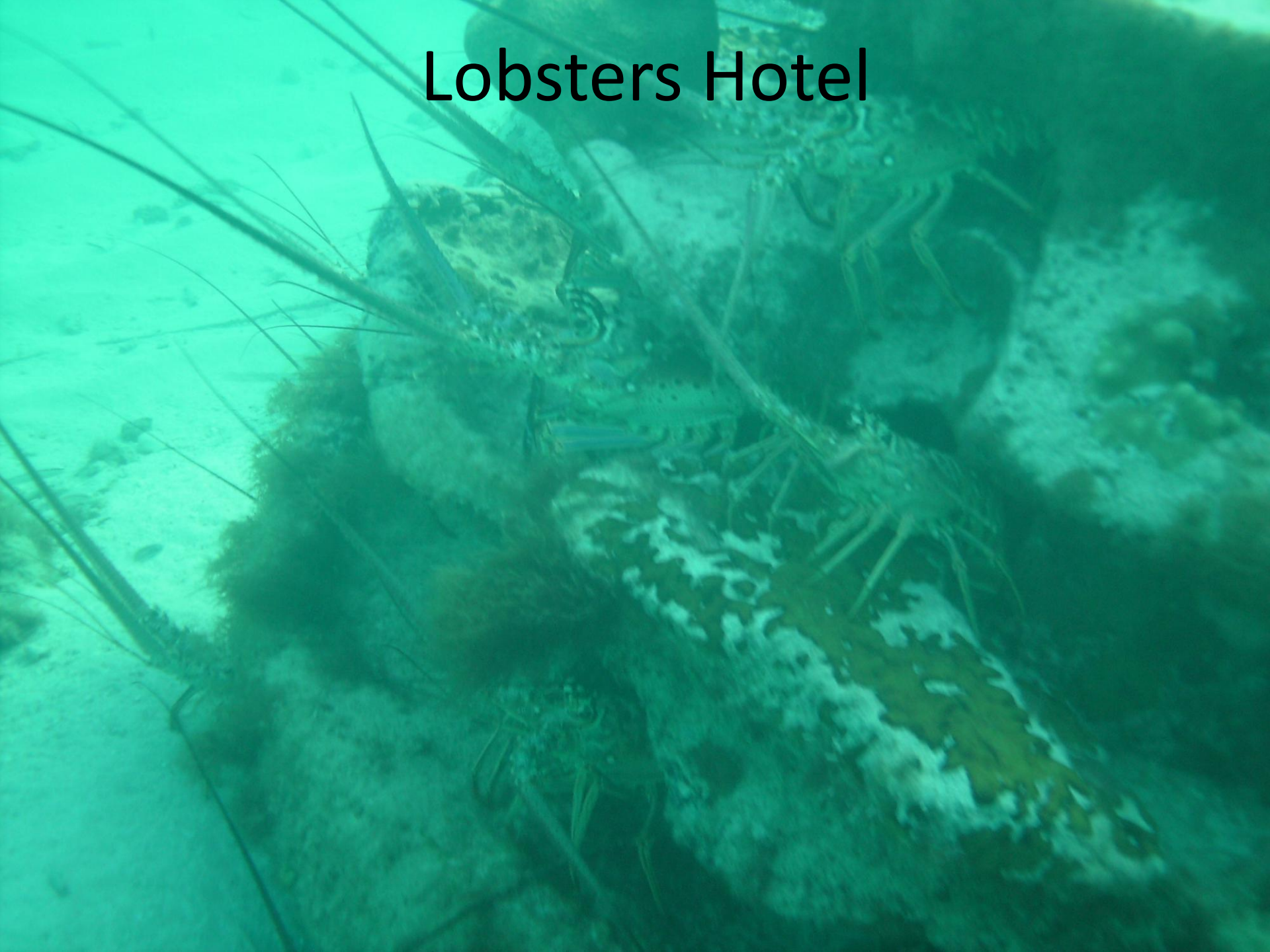
- Surface Area
- Surface Texture
- Curved Design
- Concave openings
- Inert
- Low Center of Gravity
- Wave Attenuation
- Water flows
- Relief
- Stays put

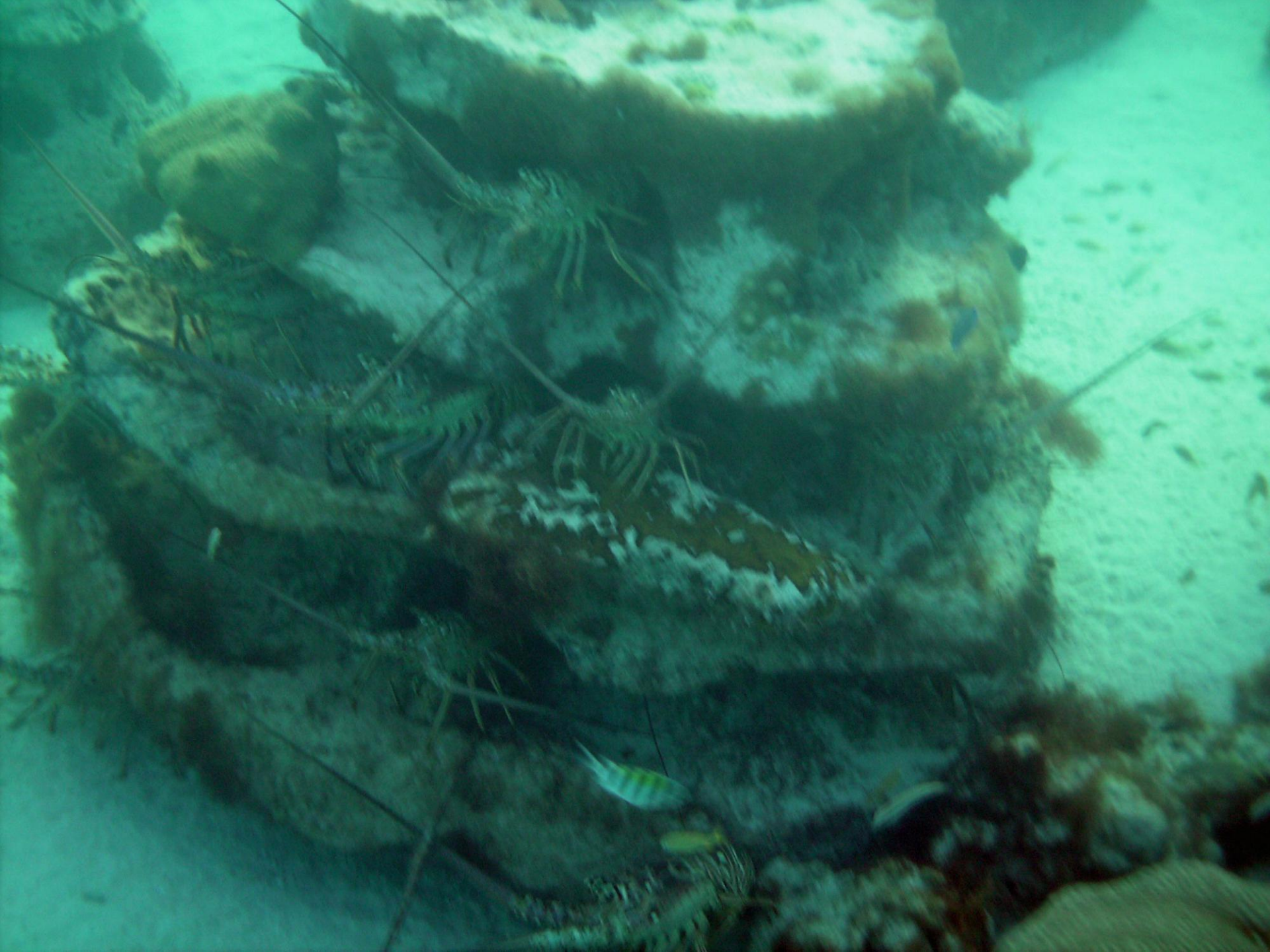
Habitats

- Crustacean
- **Moluccas**
- Corals
- EFH

Crabs

Lobsters Hotel





Mollusks

Oyster Research

- Comparisons to other structures since 1990 research has show more oysters on Reef Balls...
- Historic Surveys show tremendous success on Reef Balls
- My surveys show





Morris Landing

Bird Island Phase I (year 4) 2016



Bird Island 360 Video



Stick with the Flow

Design -

Ideal Oyster Dome

Aesthetics

- Does it Look Natural
- Community acceptance

Breakwater and Oysters

Water flow behind a sill or breakwater

Eco Rap

Deployment -

Reef Balls along Sea Wall



Natural Looking Shoreline



Relief

